

# Oceano Dunes SVRA Dust Control

Mat Fuzie, Acting Deputy Director  
Ronnie Glick, Senior Environmental Scientist  
California Department of Parks and Recreation  
Off Highway Motor Vehicle Recreation Division



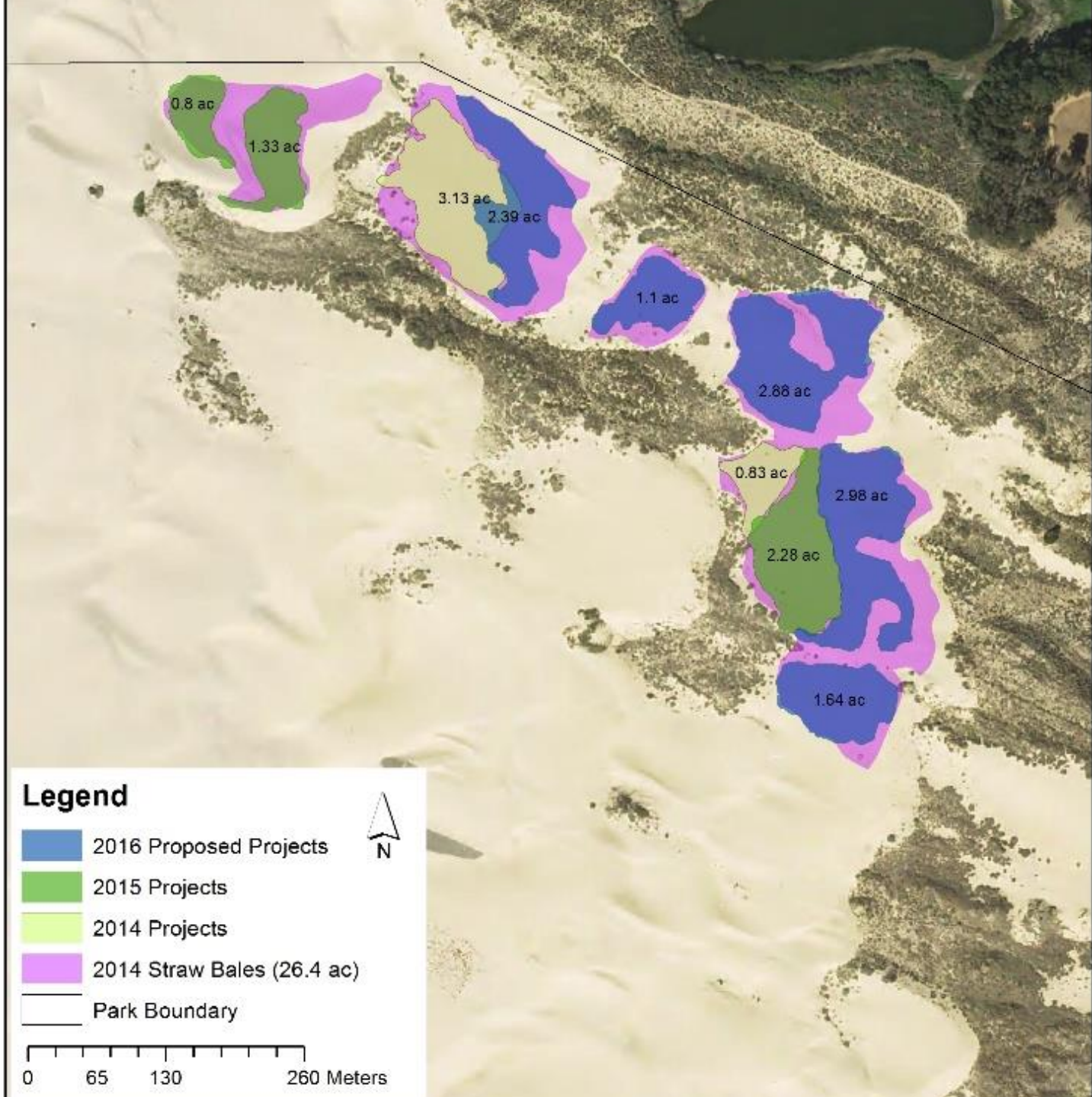
# Significant Sand Transport Control

- 2011 - Straw Bale Pilot Project (1.2 acres)
- 2012/13 – Restoration Pilot Projects (3 acres)
- 2014 Dust Control (45 acres total)
- 2015 Dust Control (70 acres total)
- 2016 Dust Control (70 acres total)
- 2017 Dust Control (50 acres total)
- Ongoing Planting and Restoration
  - Approximately 12 - 15 acres per year since 2006

# Straw Bales from 2014 (30 acres)









# Straw Bale Restoration











# Future Efforts

- Final EIR in March 2017 for 5 years of dust control projects
  - 20 acres of vegetation per year and 40 acres of seasonal dust control
- Finalize Coastal Development Permit
  - Hearing scheduled for September 2017
- Track Out Control on Grand and Pier Avenues





# Moving Forward

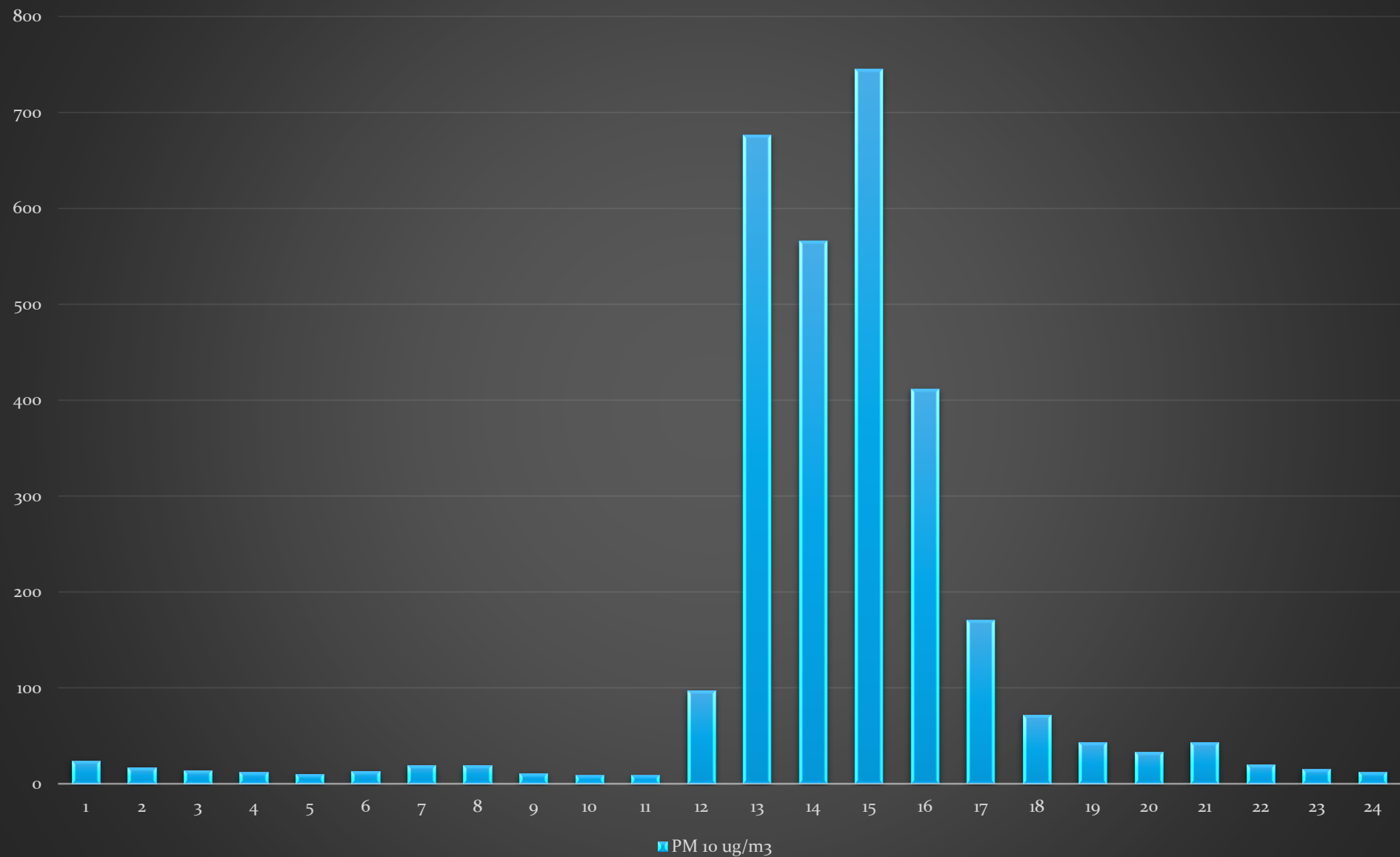
- Scientific Research
- Projects on the Ground
- Legal and Permit Compliance
- Collaboration with APCD and ARB

# Case Study February 22, 2017

- Park closed to camping starting 2/14/17
- Park closed to day use during most days because of stream flows and high tides.
- Day use is limited during this period
- Park closed to all public from 17<sup>th</sup>-19<sup>th</sup>
- 2.5 inches of rain from 2/17-2/22
- 24 Hour Average PM 10
  - CDF 127 ug/m<sup>3</sup>
  - Mesa 2 74 ug/m<sup>3</sup>



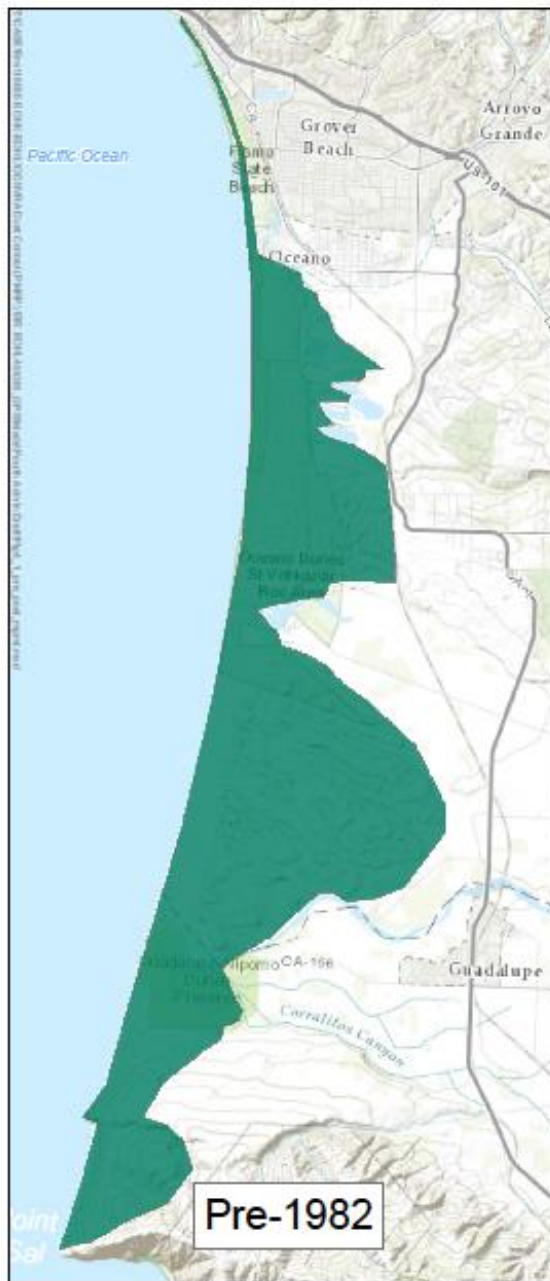
## CDF February 22, 2017



# Conclusion

- State Parks is committed to helping improve air quality on the Nipomo Mesa
  - Continued collaboration between ARB, APCD, and State Parks
  - Ongoing effort towards achieving federal and state standards
- 
- A group of 15 people, including men and women of various ages, are standing in a line on a sandy dune. They are dressed in casual outdoor attire, including jackets, hats, and jeans. The background shows a vast, flat landscape under a cloudy sky, with distant hills visible on the horizon. The overall tone is professional yet approachable, suggesting a collaborative effort in a natural setting.





- Area open to motorized recreation
- Area closed to motorized recreation